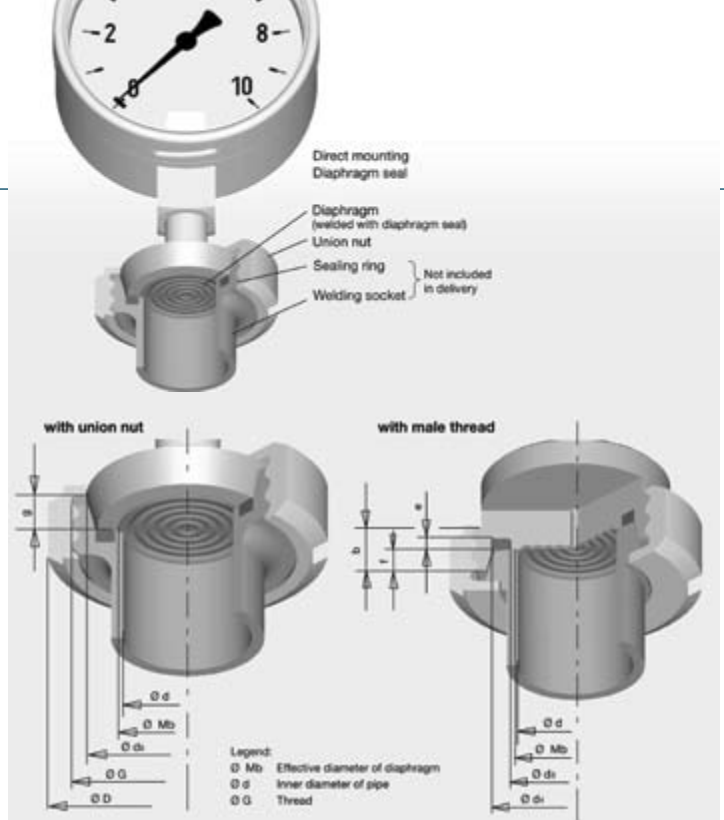


Chemical Seals



DAIRY SEAL

Application: food, beverage, paint, biochemical and pharmaceutical industry

Material: Grade 316 Stainless Steel

Diaphragm: Flush welded 316 Stainless Steel (other material/coatings on request)

Protection: PTFE (Teflon coating available)

Gauge Port: Female: 1/4" BSP, BSPT or NPT

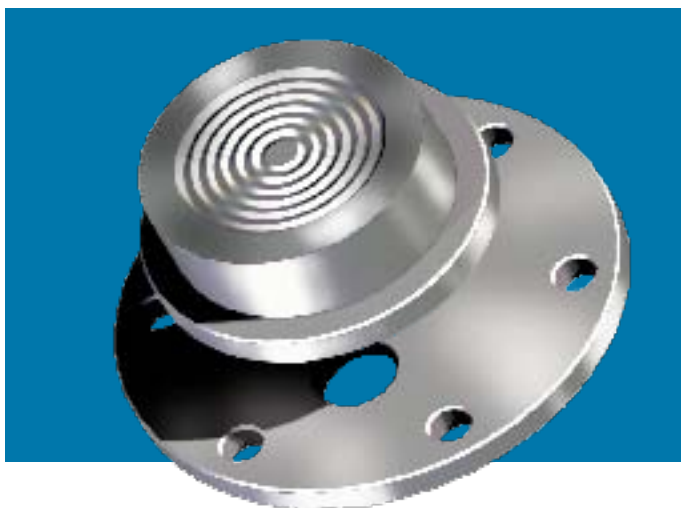
Optional: 3/8", 1/2" BSP, BSPT or NPT

Process Connection: NW25 — 65, SMS 38 & 51

Minimum Pressure: 30 PSI

Maximum Pressure: 40 BAR

DN	For pipe Outside \varnothing x thickness	PN	Dimensions in mm										Weight in kg		
			G	b	d	Mb	D	d _s	d ₄	d ₆	e	f	g		
20	23 x 1.5	40	Rd 44 x 1/6	14	20	22	54	23	32.8	36.5	3	6	8	0.4	
25	29 x 1.5	40	Rd 52 x 1/6	14	26	25	63	30	39.8	44	3.5	7	10	0.4	
32	35 x 1.5	40	Rd 58 x 1/6	14	32	32	70	36	45.8	50	3.5	7	10	0.5	
40	41 x 1.5	40	Rd 65 x 1/6	14	38	40	78	42	51.8	56	3.5	7	10	0.75	
50	53 x 1.5	25	Rd 78 x 1/6	14	50	52	92	54	63.8	68.5	3.5	7	11	0.8	
80	85 x 2	25	Rd 110 x 1/4	20	81	71	127	85	94.8	100	3.5	8	12	1.25	



PULP & PAPER

Application: DN48 used in the pulp and paper industry

Material: Grade 316 Stainless Steel

Diaphragm: Flush welded 316 Stainless Steel (other material/coatings on request)

Gauge Port: Female: 1/4", 3/8", 1/2" BSP or NPT

Process Connection: DN48

Minimum Pressure: 30 PSI

Maximum Pressure: 40 BAR



TRI-CLAMP

Application: food and beverage industry

Material: Grade 316 Stainless Steel

Diaphragm: Flush welded 316 Stainless Steel (other material/coatings on request)

Gauge Port: Female: 1/4", 3/8", 1/2" BSP or NPT

Process Connection: 1.5" or 2" Tri-clamp

Minimum Pressure: 15 PSI

Maximum Pressure: 580 PSI

Burst Pressure: 25 000 PSI

Chemical Seals



XWD1

Application: general application in the process industry
Material: 316 Stainless Steel (upper & lower flange)
Diaphragm: Welded 316 Stainless Steel
 (other materials/coating on request)
Thread Option: Gauge Port: Female: ¼" BSP
 Optional: ¼" 3/8", ½" BSP, BSPT or NPT
 Process Connection: Male & female: ½" BSP, ¾" BSP, BSPT or NPT. Optional: ¼" 3/8" BSP, BSPT or NPT, flanged type
Minimum Pressure: 15 PSI
Maximum Pressure: 2 500 PSI
Burst Pressure: 50 Mpa



XWD3

Application: water purification plants
Material: Top & bottom housing material: PTFE (Teflon)
Diaphragm: PTFE (Teflon)
 Options: PVC or Polypropylene top & bottom housings
Fill Screw: 316 Stainless Steel
Thread Ranges: ¼", ¼" 3/8", ½", 1" (NPT/NPTS/BSP/BSPT) female threads
Minimum Pressure: 100kpa
Maximum Pressure: 40 BAR



FLANGED SEAL

Flanged seals are for continuous use for safety concerns. Cleanout type for easy cleaning, with flushing connections available.
Material: Grade 316 Stainless Steel (Upper & lower flange)
Options: Monel, Hastelloy B, Hastelloy C, Titanium, Tantalum, PVC, Carbon steel, Teflon, Alloy 20 and more available (nickel plated carbon steel upper housing standard, other material available).
Configurations: ½" (15 mm), 1" (25 mm), 1½" (40 mm) and 2" (50 mm)
 Pipe size & #150 and #300 pressure rating standard. (Other configurations available).
Instrument Connections: ¼" & ½" BSP female gauge connections standard (other connections available).
 Saddle diaphragm seals available upon request.



MIDI 50 mm Midi seal (welded system)

Application: in the process industry where space is minimal
Material: Grade 316 Stainless Steel
Diameter: 50 mm
Diaphragm: Welded 316 Stainless Steel
Gauge Port: Female: ¼" BSP, BSPT or NPT
Optional: ¾", ½" BSP, BSPT or NPT
Process Connection: Male & Female: ¼" BSP, BSPT or NPT
Optional: ¾", ½" BSP or NPT
Minimum Pressure: 15 PSI
Maximum Pressure: 2 500 PSI
Burst Pressure: 10 000 PSI

MINI 35 mm Mini seal (welded system)

Diameter: 35 mm
Minimum Pressure: 100 PSI
Maximum Pressure: 6 000 PSI
Burst Pressure: 25 000 PSI

Chemical Seals



XWD4

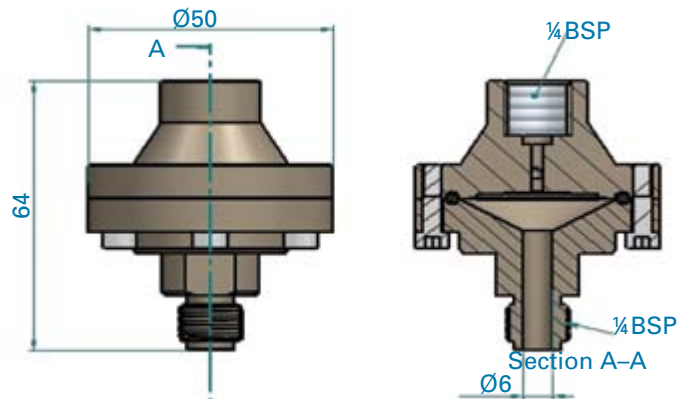
Application: general in the process industry
Material: Top & bottom housing material: 316 Stainless Steel
Diaphragm: Welded 316 Stainless Steel/Tantalum/Teflon coated
Sealing: O-ring, Viton
Fill Screw: 316 Stainless Steel
Thread Ranges: 1/8", 1/4", 3/8", 1/2", 1" (NPT/NPTS/BSP/BSPT)
 Male threads are available on request
Minimum Pressure: 100kpa
Maximum Pressure: 40 BAR
 (Higher pressures available on request - complete welded system).



XWD5

Application: Water purification plants
Material: Top and bottom housing 316L, PTFE coated
Diaphragm: 316 SS PTFE (Teflon). Option: 316L uncoated
Fill screw: 316 stainless steel
Thread size: Instrument connection 1/4" BSP female
 Process connection 1/4" BSP male
Minimum Pressure: 100kpa
Maximum Pressure: 16 BAR

Dimensions in mm



XWD6

Application: general application in the process industry
Material: 316 Stainless Steel (upper & lower flange)
Diaphragm: Welded 316 Stainless Steel
 (other materials/coating on request)
Thread Option: Gauge Port: Female: 1/4" BSP
 Optional: 1/4", 3/8", 1/2" BSP, BSPT or NPT
 Process Connection: Male & female: 1/2" BSP, 3/8" BSP, BSPT or NPT. Optional: 1/4", 3/8" BSP, BSPT or NPT, flanged type
Minimum Pressure: 15 PSI
Maximum Pressure: 2 500 PSI
Burst Pressure: 50 Mpa