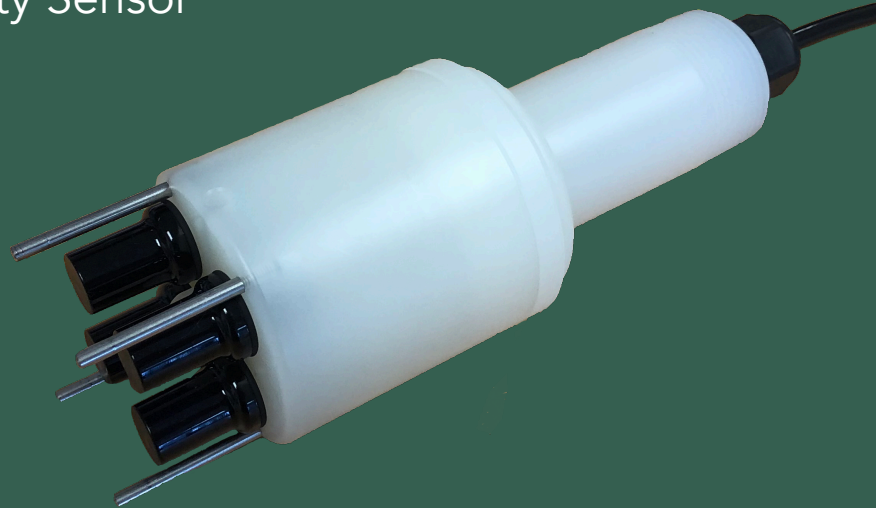


T30-SWW

Suspended Solids / Turbidity Sensor

Get better control and monitoring of your Stormwater run-off, Sediment, Raw Water and Surface Water. Bringing sophisticated process control suspended solids sensors to Stormwater and Waste

- Four beam self compensating sensor, virtually eliminates drift due to contamination or electronic ageing.
- Immersion style.
- Simple user interface.
- Accurate, repeatable & reliable.
- Low power suitable for remote installations
- Connects directly with 4-20mA and Modbus RS485, or SDI-12



T30-SWW Measurement Range, 0 to 1000 NTU, 0 to 750mg/l SiO₂

Multi-beam sensor using both attenuated and 90° scattered light. The multi-beam system compensates for fouling of surface and ageing of electronics providing a very repeatable output.

Applications include;

- Stormwater sediment runoff monitoring
- Flocculant dosing and control
- Wastewater monitoring and control
- Monitoring of clarifier overflow weirs
- Raw water inlet turbidity measurement to water treatment plants
- Surface water monitoring
- Solids loading in rivers and streams
- Final outlet of effluent from DAF plants
- Filtration Monitoring and control

Specifications

Measuring Range	Immersion Sensor: 0 to 1000 NTU 0 to 750mg/l SiO ₂ (the measuring range will vary according to media and particle characteristics)
Accuracy	+/- 2% of reading
Repeatability	+/- 1% of reading
Temperature	0 to 50°C operating range
Pressure	5 Bar
Cable	Polyurethane covered cable rated to 95°C. Extension cables can be supplied to extend the cable up to 100m.
Outputs	Modbus RS485, 4-20mA and 1 x solid state relay or SDI-12 only
Power Requirement	Modbus only - 0.25W at 3.7V 4-20mA and Modbus - 9 to 32V DC SDI-12 - 0.1W (working), 0.002W (asleep) at 3.7 to 32V DC

Model Number Selection Guide

Body Style	T30-SWW - Immersion Body
Wave Length	880nm - Standard.
Body Material	PP - Polypropylene, Fingers - Polysulfone
Cable	10- Supplied with a 10m cable as standard. Other lengths available
Output	MB - Modbus RS485, or SD - SDI-12
Jet Nozzle	Requires water or airflow. Air to 5 Bar

Sample model no; T30-SWW-880-PP-10-MB

Calibration Shipped with PC based App and USB Dongle

