

Flow Monitor Flow Indicator

DKM/A



Operation

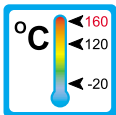
The flow monitors and indicators type DKM/A operate with the float measuring principle



Application

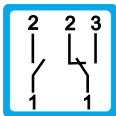
The flow monitors and indicators type DKM/A are used for measuring and monitoring the flow of oils and other viscous media.

They are designed in such a way, that also with changes of viscosity, a reliable limit value monitoring is possible. Here the kinematic viscosity may vary between 30 cSt and 600 cSt.



Areas of application are:

- Central lubrication
- Circulation lubrication
- Transformers



Features

The DKM/A series proves itself through reliable function and easy handling. Further characteristics of this sturdy type are:

- universal orientation
- high reliability
- viscosity compensated
- high switch accuracy
- infinitely variable switchpoint adjustment through user
- EX-version to ATEX available
- Threaded connection
Special threads on request
- high pressure resistance

Installation hints

The installation of the instrument can be done in any way in the system. The flow direction must be observed.

The instrument must not be used as a supporting part in a pipeconstruction!

The medium must not contain any solid particles!
We recommend the installation of strainers type SFD or SFM.

External magnetic fields influence the switch contact. Keep adequate distance to those magnetic fields (e.g. electromotors)!

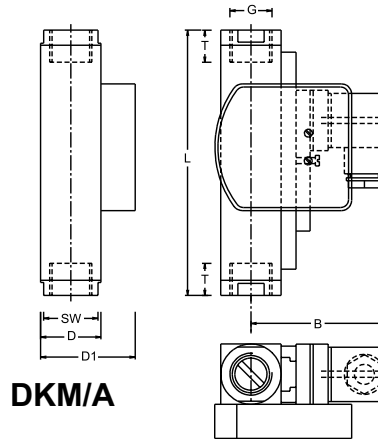
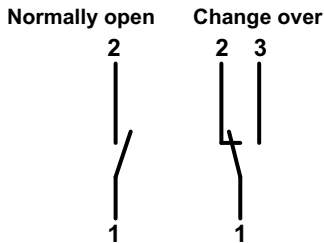
The operating instruction for DKM/A must be observed under any circumstances!

DKM/A 1 0002 10-04 E M



Measuring Ranges, Technical Data

Connection diagram



Summary of types DKM/A

Type	Switch range* [l/min]	Overall dimensions mm								Weight approx. [g]					
		SW	D	D1	B	G	DN	T	L						
DKM/A-1/1	0,1 - 0,8	34	40	57	76	1/4"	8	21	152	1590					
DKM/A-1/2	0,5 - 1,5	34					15	21	152	1515					
DKM/A-1/4	1 - 4	34					20	21	152	1430					
		40					25	17	130	1250					
DKM/A-1/8	2 - 8	34	40	57	76	1/2"	15	21	152	1515					
DKM/A-1/10	3 - 10						20	21	152	1430					
DKM/A-1/15	5 - 15						25	17	130	1250					
DKM/A-1/24	8 - 24						40	25	17	130	1250				
DKM/A-1/30	10 - 30	34	40	57	76	3/4"	20	21	152	1430					
DKM/A-1/45	15 - 45						25	17	130	1250					
DKM/A-1/60	20 - 60						40	40	57	76	1"	25	17	130	1250
DKM/A-1/90	30 - 90											25	17	130	1250
DKM/A-1/110	35 - 110	40	40	57	76	1"	25	17	130	1250					

* Other switch ranges on request

Operating data	DKM/A	
Operating pressure:	PN 250 bar (Brass) / PN 300 bar (Stainless Steel)	
Pressure drop:	0,02 - 0,4 bar	
Maximum temperature:	120 °C (optional 160 °C)	
Viscosity range:	30 cSt to 600 cSt	
Accuracy:	±10% of full scale	
Electrical data		
Normally open:	max. 250V • 3A • 100VA	
Change over:	max. 250V • 1,5A • 50VA	
Atex II 2G EEx m II T6	Change over: 250V • 1A • 30VA, IP67 / Normally open: 250V • 2A • 60 VA, IP67	
EEx m II T6	Change over: 250V • 1A • 30VA, IP67 / Normally open: 250V • 2A • 60 VA, IP67	
EEx ia IIC T6	Change over / Normally open: 45V • 1A, IP67	
Ingress Protection:	IP65 (plug connection DIN 43650 Form A) IP67 (1 m sealed in cable, with EEx-version 2 m)	
Output signal:	The contact opens / changes, when the flow falls below the set point.	
Power supply:	Not required (potentialfree reed contacts)	
Other plug types or cable lengths on request		
Material	Brass	Stainless Steel
Wetted parts:	Brass	1.4571
Spring: (wetted part)	1.4571	1.4571
Gaskets: (wetted part)	Viton (optional Perbunan, EPDM)*	Viton (optional Perbunan, EPDM)*
Magnets: (wetted part)	Hardferrit	Hardferrit
Housing: (wetted part)	Brass nickel-plated	1.4571
Display	Makrolon / Brass nickel-plated	

* Other gasket materials on request

