

Elettrosonda Q

*Electroprobe at high, low and variable sensitivity
for DIN rail*

The electroprobes of the Q, series, produced by MAC 3, are regulators of conductive fluid suitable for the minimum and maximum level control of deep well, tanks, cisterns etc. The operating principle is based on the detection, on the part of the control box, of the fluid resistance the level being controlled by means of special probes immersed in the liquid with the longest acting as a common element. When the level of the liquid inside the container or the well wets all three probes a relay is activated and subsequently deactivated only when the level descends, uncovering the lower probe.

Models NS (the best for waters)

In the case of wells with a diameter max of 100 mm the NS model probes should be positioned in such a way that there is not more than mt 2,0 between the lowest and the highest

(sufficient to protect the pump). For wells with a larger diameter, the probes can be set at a greater distance, there are no limits for tanks. To conclude, liquids with a total resistance of 5,6 Kohm max can be well controlled. The control box can be placed at a distance of up to 1,000 mt, from the probes.

Models AS

To control liquids with low conductivity, rainwater for example the AS type is particularly suitable. These models permit liquids with a very high total resistance up to 70 Kohm, to be controlled.

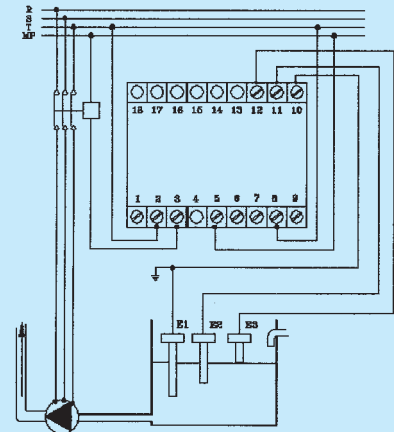
Models SR

For the control of conductive liquids with unknown conductivity this model is essential which controls up to 100Ω.

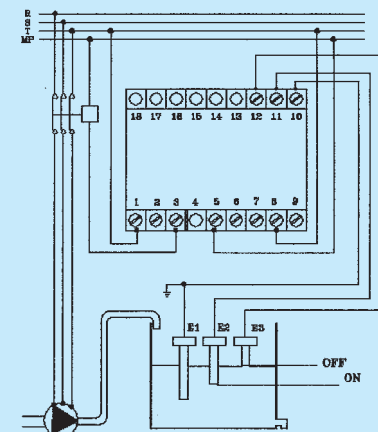
Type	Vac single-voltage
Supply voltage	24 - 117 - 230 - 380-415V~ 50 ÷ 60 Hz
Inter-electrode voltages	10V~
Power consumption	3VA
Type	Vdc double-voltage
Supply voltage	12/24V-
Inter-electrode voltages	1,5V pp
Power consumption	Max 2 Watt
General features	
Operating resistance	5,6 KΩ (NS) 68 KΩ (AS) 0 ÷ 100 KΩ (SR)
Contact rating	
AC1 resistive load	5A to 250V~
AC ind. load Cos φ 0.4	2A to 250V~
DC inductive load	5A to 30V~
Dielectric strength	2000V
Response time	100 ms
Operating temperature	- 10° ÷ + 50 °C
Storage temperature	- 20° ÷ + 80 °C
Dimensions	mm 90x54x59
Weight	gr. 200
Housing	Noryl (PPO) UL 94V0
Accessories included	n° 3 probes code TSOND00000
Note	
Max cable length of probes	m 70 ÷ 80 (AS-SR) m 1000 (NS)
Single-voltage models:	
Elettrosonda Q NS with 3 probes	24V ~ Code EQ02400003
Elettrosonda Q NS with 3 probes	117V ~ Code EQ11000003
Elettrosonda Q NS with 3 probes	230V ~ Code EQ22000003
Elettrosonda Q NS with 3 probes	380V ~ Code EQ38000003
Elettrosonda Q NS with 3 probes	415V ~ Code EQ41500003
Elettrosonda Q AS with 3 probes	24V ~ Code EQ024H0003
Elettrosonda Q AS with 3 probes	117V ~ Code EQ110H0003
Elettrosonda Q AS with 3 probes	230V ~ Code EQ220H0003
Elettrosonda Q AS with 3 probes	380V ~ Code EQ380H0003
Elettrosonda Q AS with 3 probes	415V ~ Code EQ415H0003
Elettrosonda Q SR with 3 probes	24V ~ Code EQ024R0003
Elettrosonda Q SR with 3 probes	117 V ~ Code EQ110R0003
Elettrosonda Q SR with 3 probes	230V ~ Code EQ220R0003
Elettrosonda Q SR with 3 probes	380V ~ Code EQ380R0003
Elettrosonda Q SR with 3 probes	415V ~ Code EQ415R0003
Dual-voltage models:	
Elettrosonda Q NS with 3 probes	12/24V ~ Code EC00C00003
Elettrosonda Q AS with 3 probes	12/24V ~ Code EC00CH0003
Elettrosonda Q SR with 3 probes	12/24V ~ Code EC00CR0003
All models are also available without probe	



Wiring diagram 1



Wiring diagram 2



Electro-probe accessories

The accessories manufactured by MAC 3 are to complete its range of level regulation devices.

Type	Socketes 8 pin
Code	TZ08000000
Mounting	DIN rail or surface mounting
Material	ABS
Weight	gr. 45
Dimensions	mm 60x40x23
Operating room temperature	80 °C max

Type	Socketes 11 pin
Code	TZ11000000
Mounting	DIN rail or surface mounting
Material	Noryl UL 94 V1
Weight	gr. 55
Dimensions	mm 60x40x31
Operating room temperature	80 °C max

Type	Probe
Code	TS0ND00000
Mounting	Directly in the liquid
Material	ABS
Weight	gr. 45
Dimensions	Ø mm 22x85
Operating room temperature	80 °C max

Type	Triple probe holder
Code	Tp00000000
Mounting	Hole Ø mm 65
Material	Thermosetting resin
Weight	gr. 190
Dimensions	Ø mm 80x72
Operating room temperature	80 °C max
Note	Electrodes mm Ø 5 not included. Protective terminal cover.

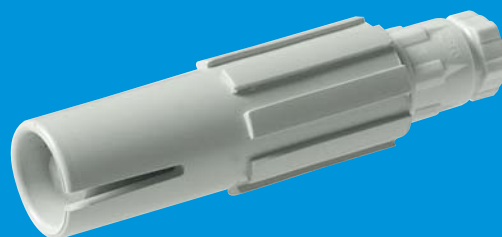
Socketes 8 pin



Socketes 11 pin



Probe



Triple probe holder

